



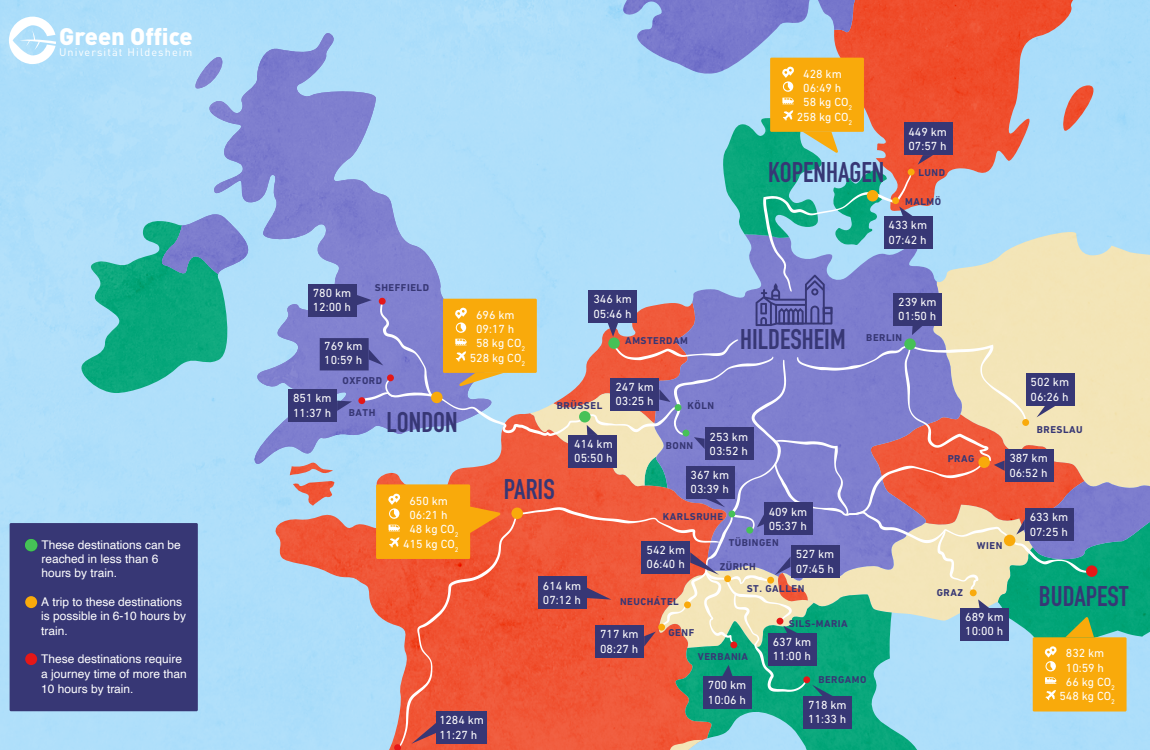
Sustainably on the move

On the way to a sustainable university

As an incoming student, you can contribute to the sustainable development of the University of Hildesheim when choosing your means of transport. The following tips will help you to get around in a sustainable and climate-friendly way.

What is already done

- ☑ At the University of Hildesheim you will receive a student card, which also serves as a semester ticket. With the Semester ticket you can travel by bus within Hildesheim and use the regional trains within Lower Saxony at no additional cost.
- ☑ On the main campus you will find a car-sharing provider whose vehicles students can use at reduced rates. [> More information](#)
- ☑ The General Student Committee AStA runs a bicycle self-help workshop called [FAZZE](#) where you can repair your bicycle under supervision and on the main campus you will find a [bicycle repair station](#).
- ☑ A climate protection manager develops measures for more climate-friendly mobility at the University of Hildesheim. [>More information](#)



The Green Office's rail travel map shows how quickly many European destinations can be reached from Hildesheim. [> More information](#)

In case of different route options, the shortest one was chosen. Kilometers and hours refer to one route. CO₂ emissions refer to the outward and return trip.

Sources of CO₂ emissions: Ecopassanger (train), Atmosfair (plane)

What you can do

- Having your own bicycle is a flexible and inexpensive means of transport and a good complement to using the bus and train. There are many ways to buy cheap second-hand bicycles. [> More information](#)
- Would you like to get to know the region or go on vacation? Also consider a bike tour. There is a well-developed network of long-distance cycle paths around Hildesheim. [> More information](#)
- Within Germany and to neighbouring European countries, you can travel cheaply and in an environmentally friendly way by long-distance bus and train. You can get particularly cheap tickets („Sparpreis“) with Deutsche Bahn if you book online early enough. Tickets are often significantly cheaper outside the popular travel times. For cheap bus tickets, check out bus companies like **Flixbus** or **Eurolines**.
- Exchange your experiences with sustainable transport with your German and international fellow students and inspire each other. Consider whether you can travel home by bus or train. Slow travel is often more eventful than flying - and at the same time you contribute to climate protection.

You can find further information on rail travel bookings in our link collection. [>More information](#)

Stiftung Universität Hildesheim

Green Office
Universitätsplatz 1
31141 Hildesheim
Gebäude I, Raum 014

☎ 05121 883 400 10
✉ green-office@uni-hildesheim.de
🌐 uni-hildesheim.de/greenoffice
f @greenofficehildesheim
@greenofficehildesheim

Gefördert durch:



aufgrund eines Beschlusses
des Deutschen Bundestages